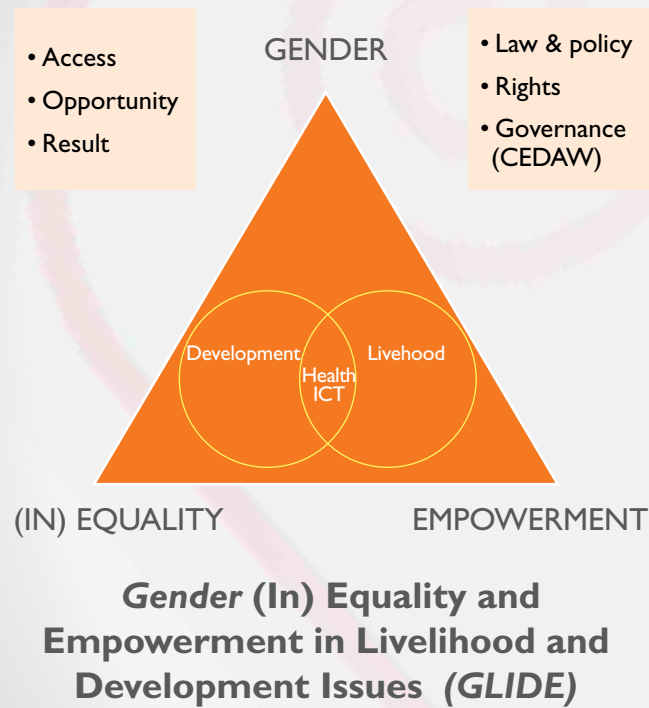


AN INTERDISCIPLINARY RESEARCH CLUSTER



THRUST AREAS



POTENTIAL RESEARCH AREAS FOR POSTGRADUATE STUDIES



Leadership and Governance
 SUSTAINABLE DEVELOPMENT Health
 EDUCATION AND CULTURE
 Economic & Policy & LAW
 Social Development



Enquiries : KANITA

Director
 Women's Development Research Centre (KANITA)
 Universiti Sains Malaysia,
 11800 USM, Penang, Malaysia
 • Tel : +60 4 653 3436 / 3433 (DL) 653 2678
 • Fax: +60 4 656 6379
 • Email : kanita@usm.my
 • Website : http://kanita.usm.my

Enquiries : IPS

Dean
 Institute Of Graduate Studies
 Universiti Sains Malaysia,
 11800 USM, Penang, Malaysia
 • Tel : +60 4 653 3888 (ext : 2941 / 2943 / 2944)
 • Fax : +60 4 653 2931
 • Email : dean_ips@usm.my
 • Website : http://ips.usm.my



Women's Development Research Centre (KANITA)

BACKGROUND

The Women's Development Research Centre (KANITA) is the first centre of its kind in Malaysia, pioneering a field that was little known and marginalised in the country's academe. KANITA is also responsible for charting the earliest history of feminist research and advocacy in Universiti Sains Malaysia (USM). Beginning with the establishment of a UNICEF-funded research cluster on women, children and poverty in 1978, through which it gained the acronym KANITA (representing the combined Malay words for women and children) and evolving into what is today a centre of excellence within the university, KANITA reflects more than thirty years of critical thinking in the development of theoretical and methodological tools and policy strategies that aim at equalising and mainstreaming gender in education and nation building. The years of experience have provided KANITA with a solid foundation for women's and gender studies programmes. The experience has also given rise to a new kind of academic culture that is enriched through multi- and interdisciplinary interactions with generic disciplines of social sciences, humanities, management, communication, education, medical sciences, health sciences and pharmaceutical sciences. Through fundamental, applied and policy research, innovations in training, publication and networking both nationally and globally, KANITA has brought new meaning to the process of engendering knowledge, thus, bringing feminist and gender perspectives to the forefront of academic thinking.

KANITA achieved its current status as an autonomous research centre within the university on 17 April 2001. The endorsement by the University Senate of KANITA's position demonstrates USM's commitment to lead in the exploration of new thinking and knowledge that considers gender as an important analytical framework for theory and research. It also reflects converging efforts and dedication of academic members from various disciplines towards championing gender equality, equity and justice in the society, both theoretically and in practice.

OBJECTIVES

- To intensify the impact and significance of KANITA as a centre of reference concerning research on women's and gender issues for the academe, state and society in Malaysia and the region.
- To conduct inter- and trans-disciplinary research in critical areas of women's and gender issues and to utilise the findings to advocate for social transformation.
- To produce publications which stimulate intellectual and public discourses on women's and gender issues.
- To develop postgraduate programmes of international standing in the field of women's and gender studies.
- To initiate and engage in intellectual, advocacy and community related activities through diverse communication strategies.
- To lead in the development of an accessible data bank and resource centre on women's and gender issues.

VISION

Transforming society towards gender equality and social justice

MISSION

As a Centre of Excellence, KANITA is committed towards research, advocacy and community engagement, utilising and promoting a gender and social equality framework. It strives to impact the academe, the state, women and the society at large.



PROGRAMME STRUCTURE

- Thesis
- Pre -Requisite Courses
 - SGS501: Gender Theories
 - SGS502: Research Methods and Analysis for Gender Studies
- Seminars
- Graduate Seminar Series
- Professional Seminar Series

ADMISSION REQUIREMENTS

Applicants should possess the following :
Bachelor's degrees with Honours in any fields, including Applied Sciences, Health Sciences and Engineering from accredited local or foreign universities.

DURATION

Master's Degree Full-time : Min. 2 semesters / Max 6 semesters
Part-time : Min. 4 semesters / Max 12 semesters

Ph.D Full-time : Min. 4 semesters / Max 10 semesters
Part-time : Min. 6 semesters / Max 15 semesters

- **MASTER OF SOCIAL SCIENCES (GENDER STUDIES) BY RESEARCH**
- **DOCTOR OF PHILOSOPHY (PHD) BY RESEARCH**

KANITA offers postgraduate studies programmes for those interested in pursuing women's or gender studies by research. Upon completion of the studies, students are awarded with Master of Social Sciences (Gender Studies) or Doctor of Philosophy degrees. Programmes are designed to produce graduates who are gender-sensitive in various work cultures and organisations, equipping those from various basic disciplines with knowledge and analytical skills of looking at the social world through a more comprehensive and inclusive manner.

The postgraduate programmes at KANITA aim at developing and enhancing candidates' analytical and practical skills in their chosen disciplines through the use of the gender lens. This lens operates through the idea that gender matters to structures, theories and practices in any discipline that the lived realities of sections of society, particularly women, are highly pertinent subject of deep inquiry.

RESEARCH THRUST AREAS

- Sustainable Development
- Economic and Social Development
- Policy and Law
- Health
- Leadership and Governance
- Education and Culture

REGISTRATION FEES (ONCE ONLY)

Malaysian Students		International Students		Personal Bond (International Students Only)
Master	RM340.00	MASTER	RM1,900.00	RM1,900.00
Ph.D	RM340.00	Ph.D	RM1,900.00	RM1,900.00

EXAMINATION FEES (ONCE ONLY)

Master's Degree	
Malaysian	International
RM750.00	RM1,000.00
PhD Degree	
Malaysian	International
RM1,000.00	RM1,500.00

TUITION FEES (PER SEMESTER)

Master's Degree	
Malaysian	International
RM3,050.00	RM4,600.00
PhD Degree	
Malaysian	International
RM3,050.00	RM4,600.00